



Jupyter Notebook from your browser

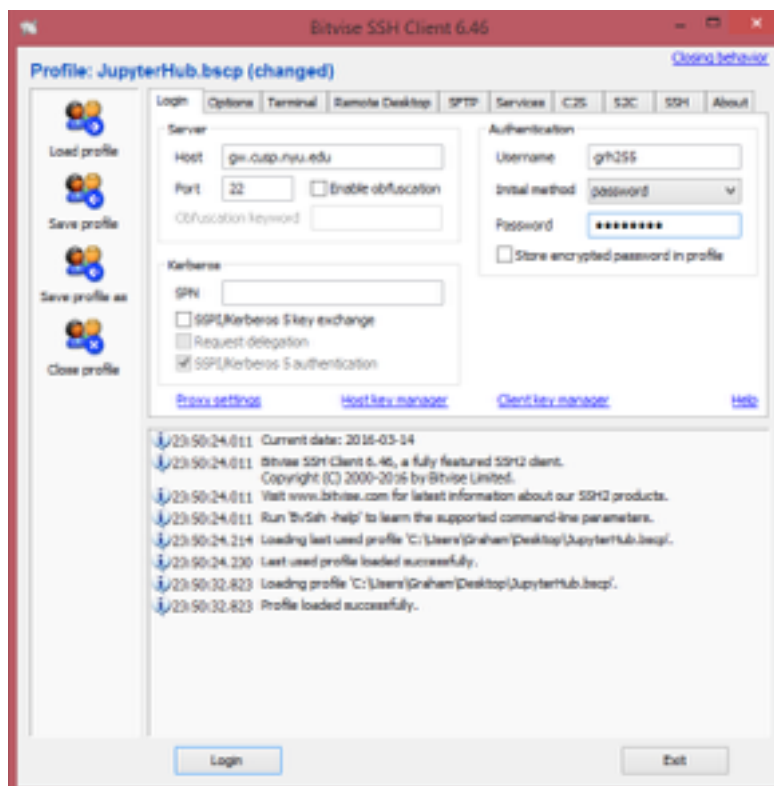
Windows Instructions

Jupyter Notebook is now available to use in the Data Facility and can be accessed through your browser.

1. [Download the zip file](#), extract the contents, and double-click the **BvSshClient-Inst** file to install Bitwise.



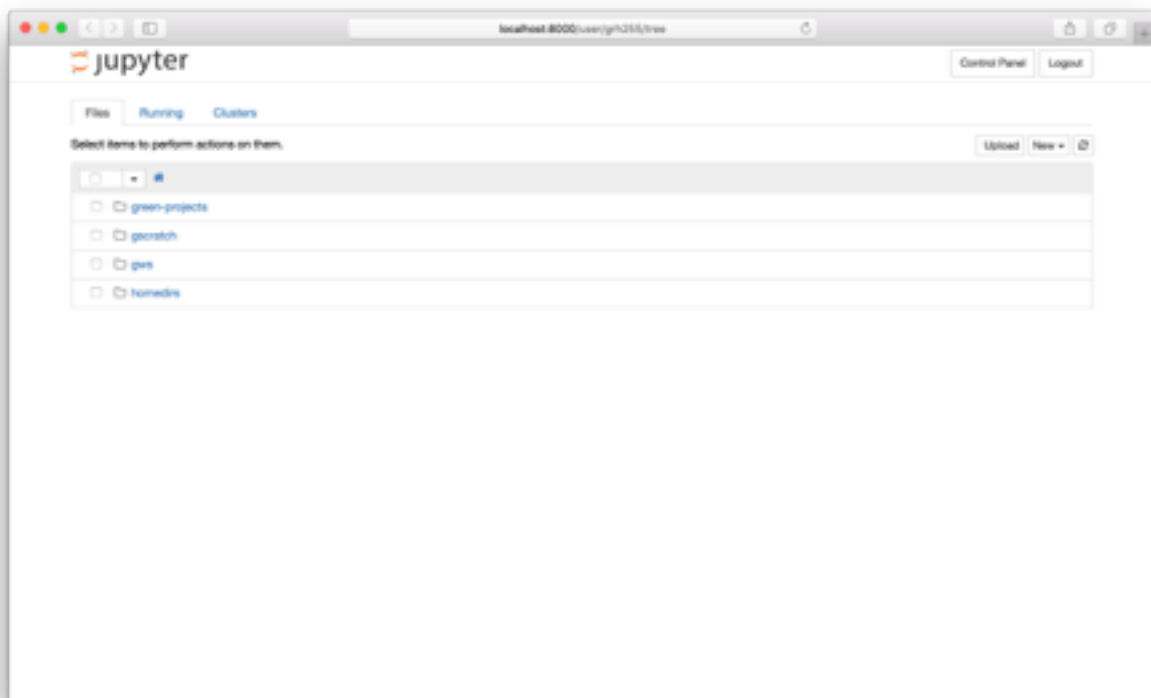
2. [Download the profile](#), open with Bitwise, and enter your CUSP credentials in the **Authentication** box within the the **Login** tab. Click the **Login** button. If a User Authentication Banner appears, simply close this.



3. Now open a web browser and enter the following into the address field. If your browser warns you about the connection, click **Continue** or **Advanced**, then **Proceed**. This option varies between browsers.

https://localhost:8000

4. Use your CUSP credentials to login. You can now navigate to your home or project directories and run Jupyter notebooks using the Data Facility's computing resources.



Troubleshooting

If you have any trouble accessing your files or folders, you may need to restart your Jupyter server. This can sometimes happen if you were recently added to a new group.

1. In Jupyter Hub, click **Control Panel** in the upper-right corner.



2. Click the red **Stop My Server** button, wait for until the **Stop My Server** button disappears, then click the green **My Server** button to restart your server.



3. Now return to your notebook and try to access or run it again. If you continue to experience issues, please email cust.it@nyu.edu with a screenshot and a brief description of the problem.